
Geoconcept Web automatic installation

Overview	3
Minimum configuration requirements	3
Installation	4
Step 1 - Language selection	4
Steps 2 and 3 - Welcome note	4
Step 4 - License	5
Step 5 - License confirmation	6
Step 6 - Path configuration	7
Step 7 - Services activation	15
Activation	17
Verification	20
Update of an existing version	21



Version : 2022-1

Date : 3/24/22

This documentation concerns version 2022 of Geoconcept Web.

Overview

See the [Geoconcept Web reference guide](https://mygeoconcept.com/doc/gcweb/docs/en/gcweb-reference-book/installation-gcweb.html) [https://mygeoconcept.com/doc/gcweb/docs/en/gcweb-reference-book/installation-gcweb.html] for more information about the installation process.

Minimum configuration requirements

The downloaded file is a self-extracting archive (a .exe file) containing the full installation. Important: if Internet Explorer is used to execute this link, the file will have a [1] suffix to the filename instead of the usual .exe file extension. Once the file has been downloaded, you should rename it and replace the [1] with the .exe extension. We recommend keeping the content of the downloaded archive somewhere safe.

- ❗ Whatever the configuration, it is essential to have installed a virtual Java machine beforehand on the host machine. Refer also to the section [Minimum software requirements](https://mygeoconcept.com/doc/gcweb/docs/en/gcweb-reference-book/pre-requis-logiciel.html) [https://mygeoconcept.com/doc/gcweb/docs/en/gcweb-reference-book/pre-requis-logiciel.html] in the reference guide.

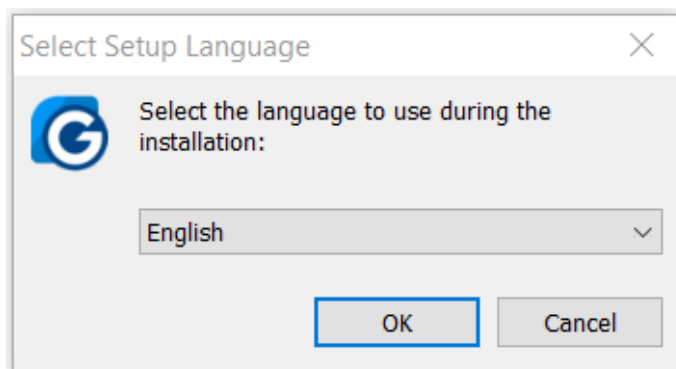
Installation

To run the installation, double-click on the setup.exe file and then follow the steps in the wizard.

Step 1 - Language selection

The first step in the wizard prompts you to select the language version to use for the installation, and therefore the language in which the Geoconcept Web will be installed.

Choosing the language version

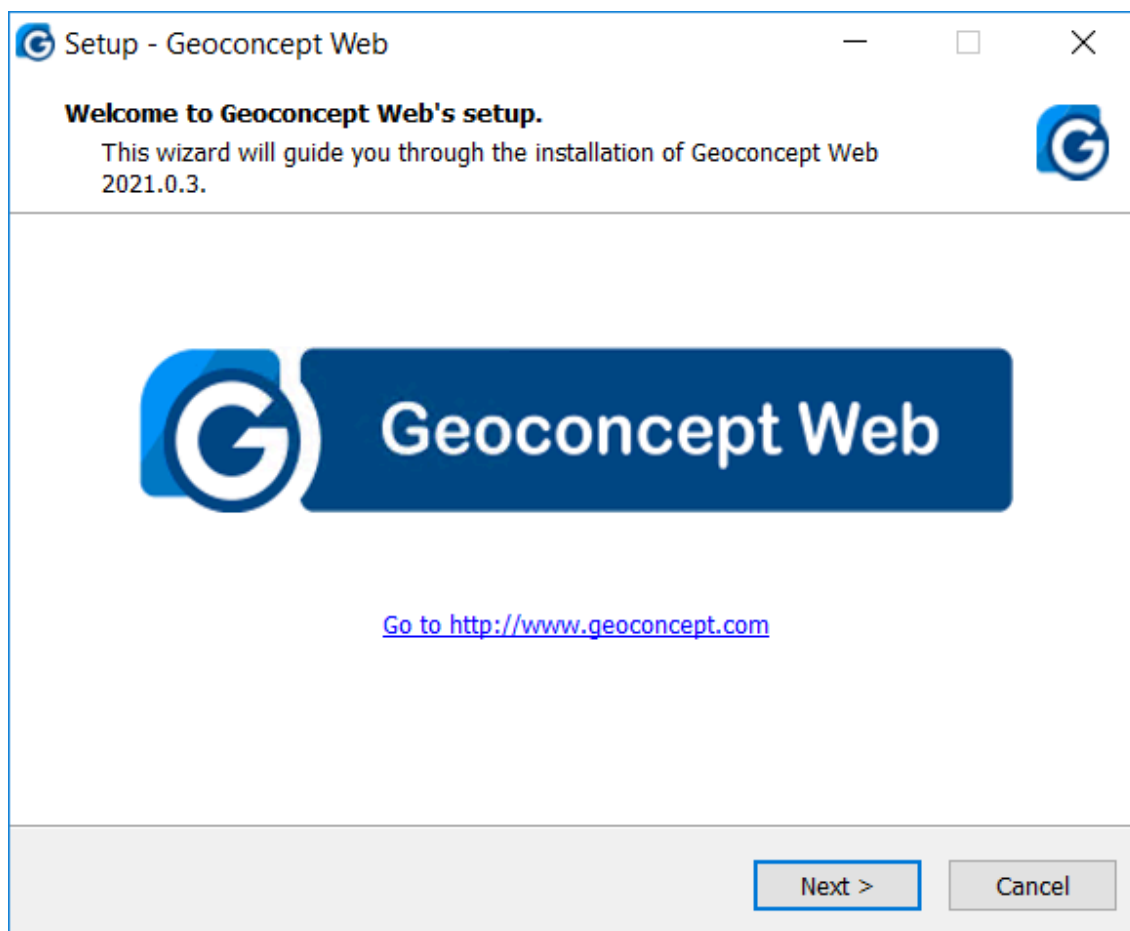


Click on **Next** to advance to the next step.

Steps 2 and 3 - Welcome note

A welcome message displays. If in the mean time a new step displays proposing several possible actions, you should choose Install a new copy of this product.

Welcome message



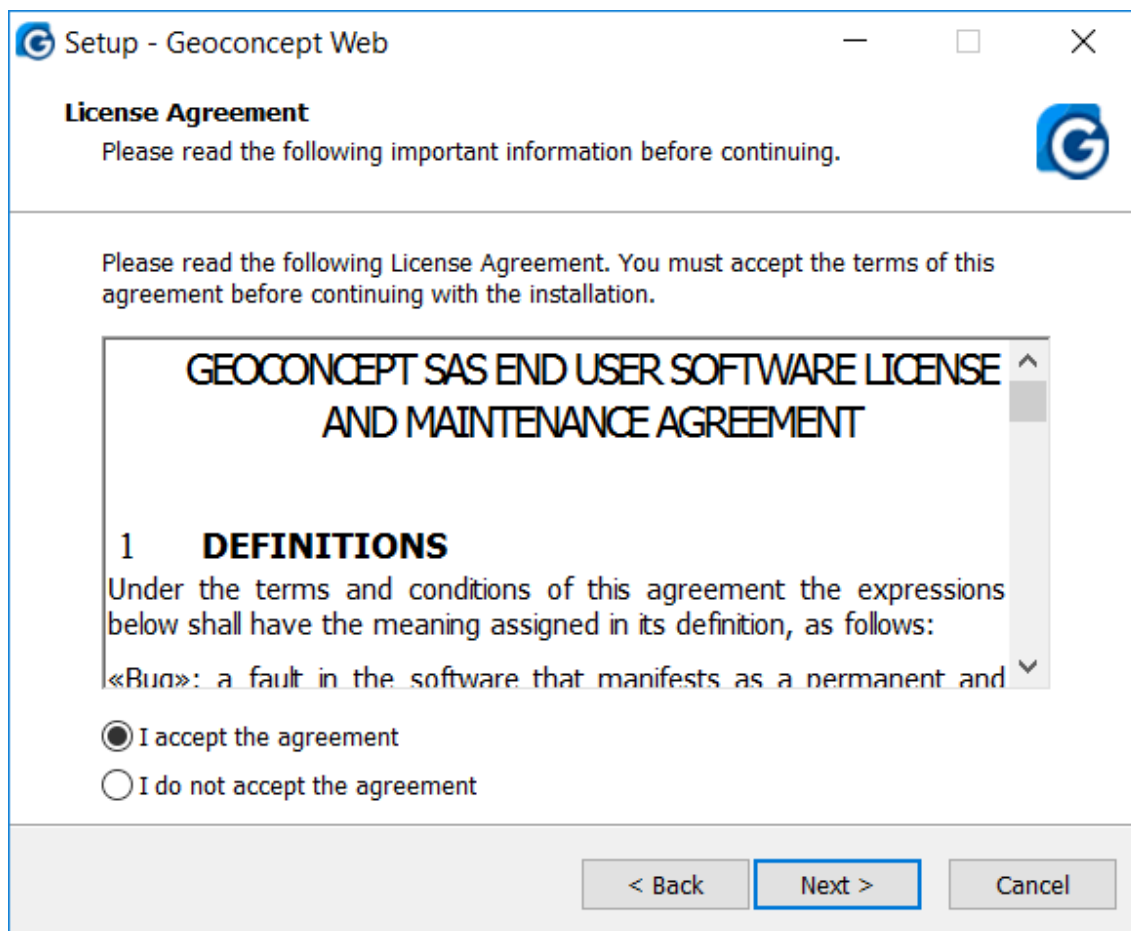
Click on **Next** to advance to the next step.

Step 4 - License

Before the installation of Geoconcept Web can take place, the user must accept the license agreement terms and conditions.

Select I accept the license terms and conditions to proceed with the installation.

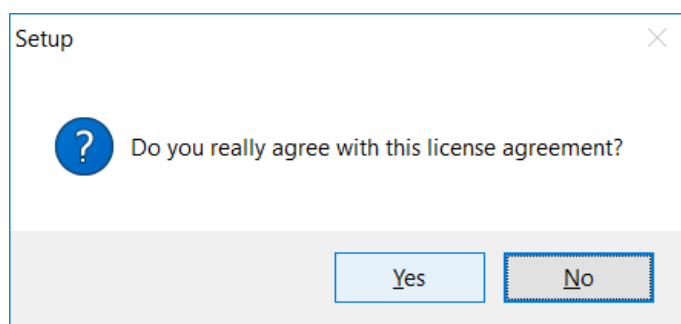
Acceptance of the license agreement terms and conditions



Confirmation of the acceptance is requested.

Click on **Yes** to continue with the installation.

Confirming acceptance of the license terms and conditions



Step 5 - License confirmation

The next step prompts the user to enter:

- The Username;

- The Company name;
- The Serial Number.

The Geoconcept Web Serial Number is either provided on the download page <https://mygeoconcept.com>, or sent in an email with the download link.

i Input of a valid Serial Number is required before the installation of Geoconcept Web can continue.

User identification

Setup - Geoconcept Web

User Information
Please enter your information.

User Name:

Organization:

Serial Number:

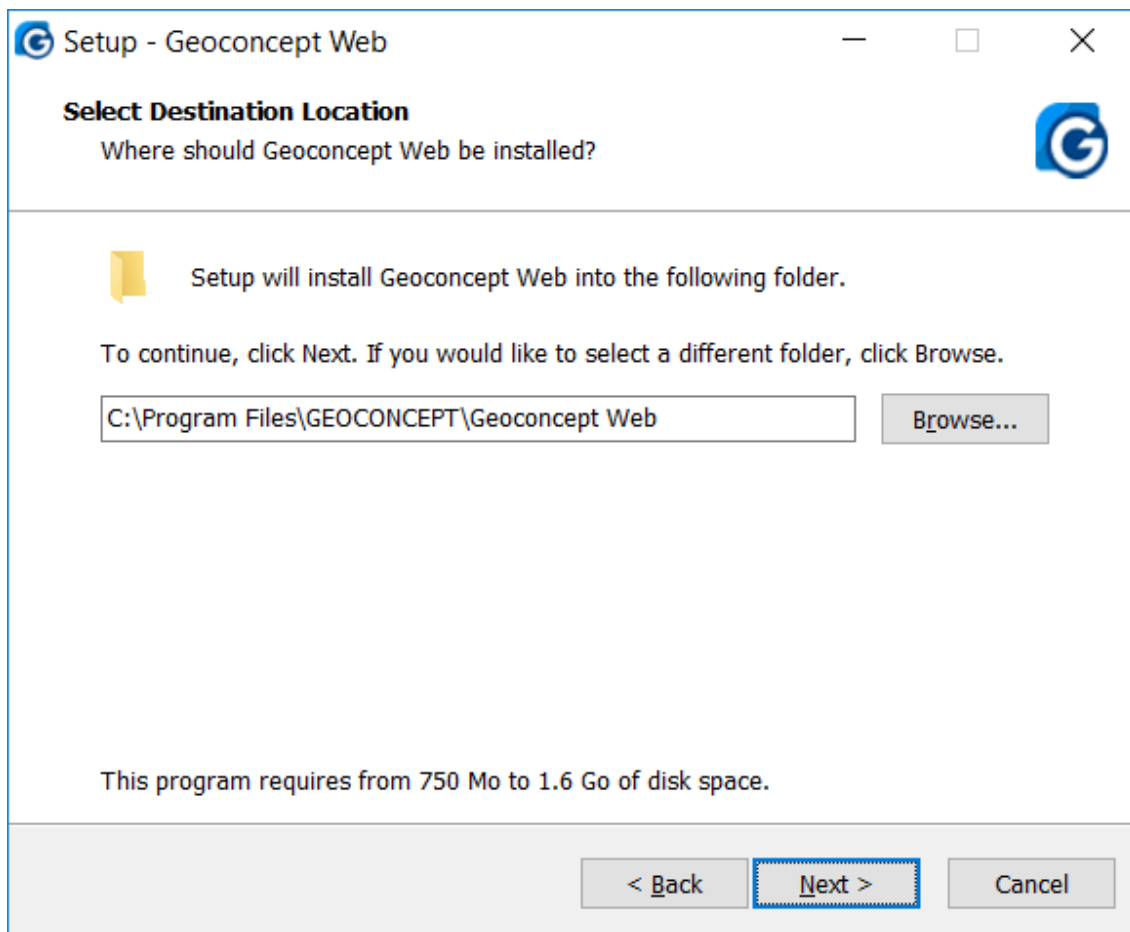
< Back Next > Cancel

Click on **Next** to advance to the next step.

Step 6 - Path configuration

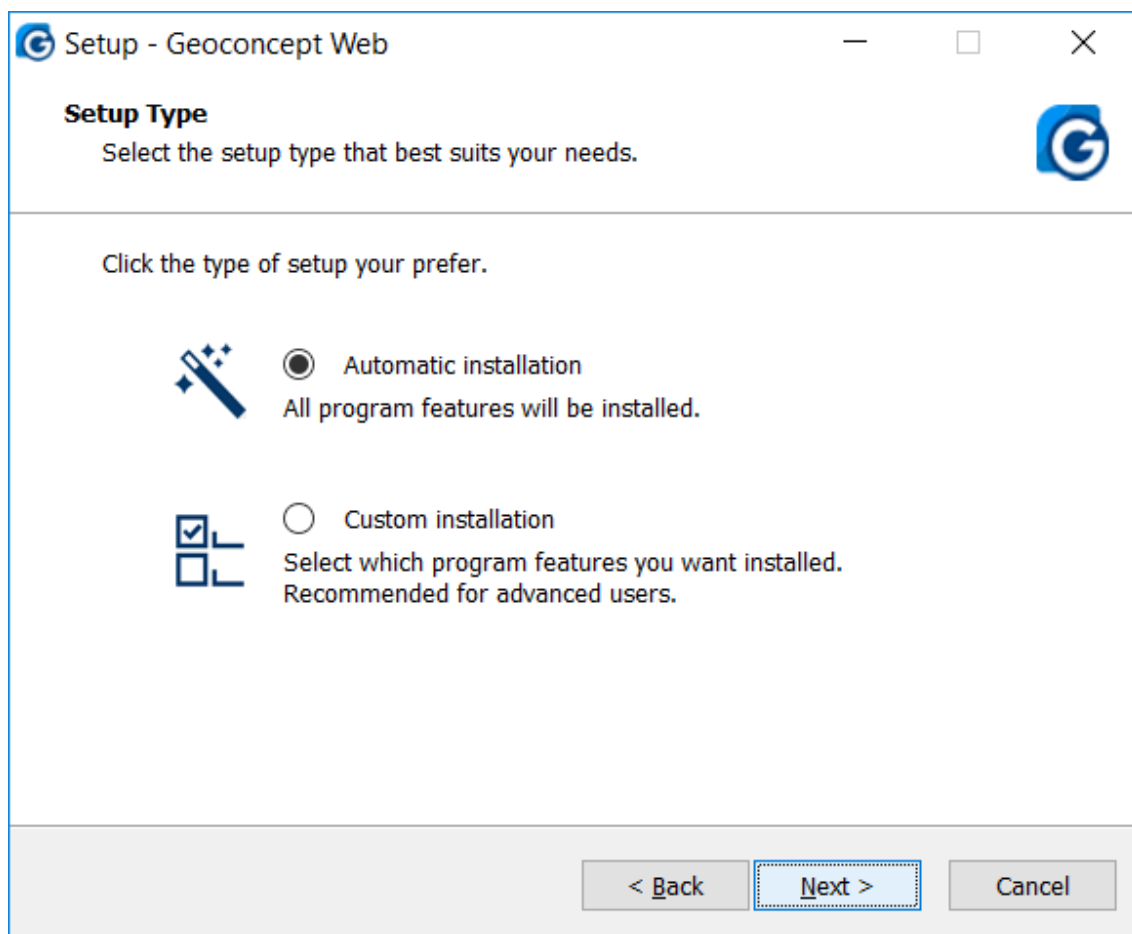
The next step requires you to define the destination disk location for the files to install. The installer proposes a default destination folder that can be modified by clicking on the **Browse**.

Choosing the destination disk location



The next step is to select the type of installation to perform.

Selecting the type of installation



There are two possible choices:

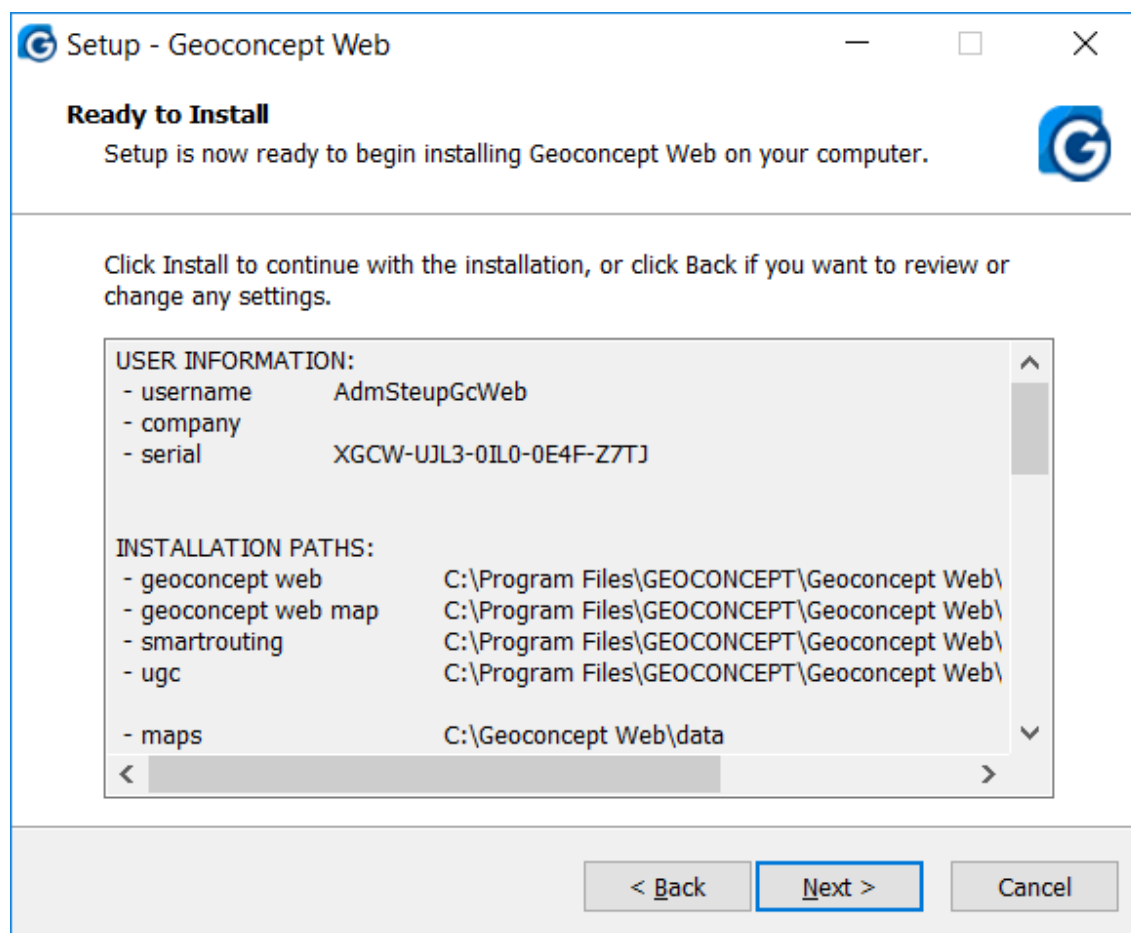
- Automatic installation: the application components will be installed with default parameters.

Click on **Next** to advance to the next step. In the next step, a summary of the components that will be installed is displayed, along with their destination disk location.



If Tomcat, and/or PostgreSQL are already present on the installation machine, they are not installed by the wizard. You may need to refer to the corresponding sections in the chapter called [Manual Installation](https://mygeoconcept.com/doc/gcweb/docs/en/gcweb-reference-book/setup-manual.html) [https://mygeoconcept.com/doc/gcweb/docs/en/gcweb-reference-book/setup-manual.html] to find out about how to configure them.

Components installed in an automatic installation



Click on **Next** to run the installation.

- Custom installation: This installation mode allows you to modify the installation parameters. The different windows display the default set of parameters. If you are unsure, you can simply bypass the wizard steps by clicking on **Next**.

This step in the wizard consists of selecting the components to install.

The components available for installation are as follows:

- Geoconcept Web (this component must be included in any installation)
- Geoconcept Web Map: allows tiling of layers to display in the portal (this component must be included in any installation);
- SmartRouting: enables route calculation (including this component is recommended);
- Universal Geocoder: allows you to geocode addresses and generate reference tables (including this component is recommended);
- Data sample: install a projet example: Loire Atlantique;

- Tools:
 - Apache Tomcat;
 - PostgreSQL;
 - PostGis.

Each of these components can be installed by checking the associated check-box in the list displayed.

This installation mode allows you to accept or refuse SSL Certification and allows you to modify Location & Password

Choosing which components to install

Setup - Geoconcept Web

Tomcat 8 configuration
Tomcat 8 SSL functionality requires a certificate.

Without SSL

With SSL

Please fill the following fields:

Keystore:
C:\Program Files\GEOCONCEPT\Geoconcept Web\tomcat

Password:
geoconcept

A default certificate will be installed for the Tomcat SSL mode.
You should install a valid one after the installation process.
Please refer to the documentation.

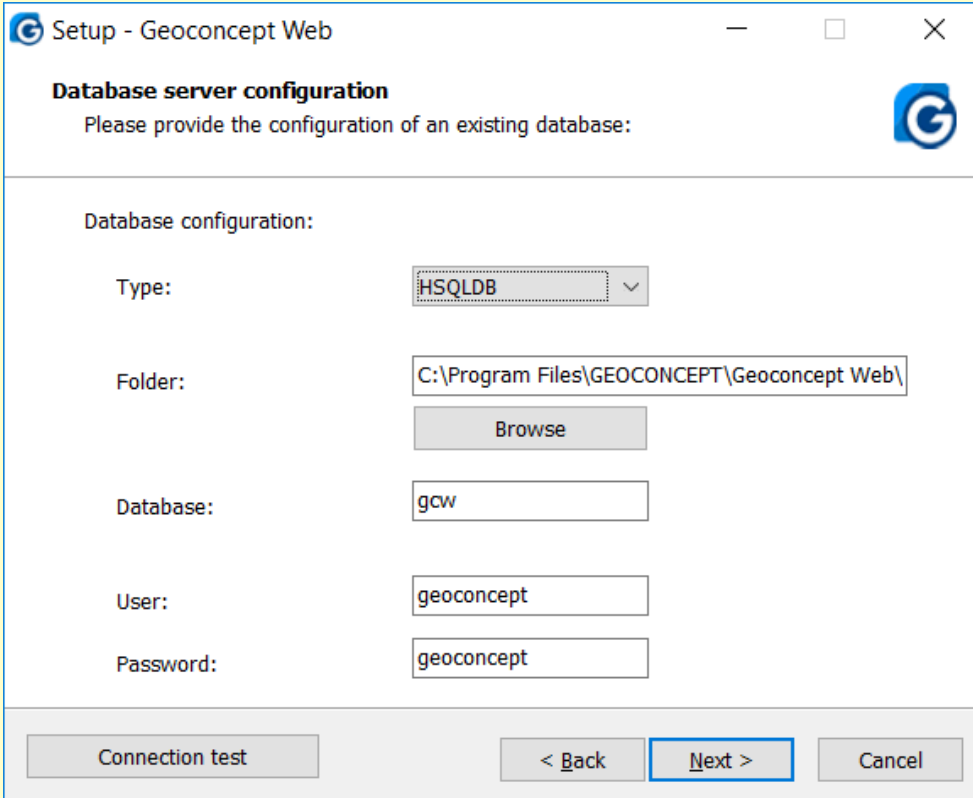
- ! In the event that you want to use a different DBMS, uncheck PostgreSQL 9.3 in the list of components to install. An additional step will be necessary in order to configure the connection to a DBMS that is already installed.

Window for the additional installation step for PostgreSQL

The screenshot shows a window titled "Setup - Geoconcept Web" with a standard Windows title bar. The main content area is titled "Database server configuration" and includes the instruction "Please provide the configuration of an existing database:". Below this, the "Database configuration:" section contains several fields: "Type" is a dropdown menu set to "PostgreSQL"; "Server" is a text box with "localhost"; "Port" is a text box with "5432"; "Database" is a text box with "gcw"; "User" is a text box with "geoconcept"; and "Password" is a text box with "geoconcept". At the bottom of the window, there are four buttons: "Connection test", "< Back", "Next >", and "Cancel". The "Next >" button is highlighted with a blue border.

Field	Value
Type	PostgreSQL
Server	localhost
Port	5432
Database	gcw
User	geoconcept
Password	geoconcept

Window for the additional installation step for HSQLDB



Setup - Geoconcept Web

Database server configuration

Please provide the configuration of an existing database:

Database configuration:

Type: HSQLDB

Folder: C:\Program Files\GEOCONCEPT\Geoconcept Web\

Database: gcw

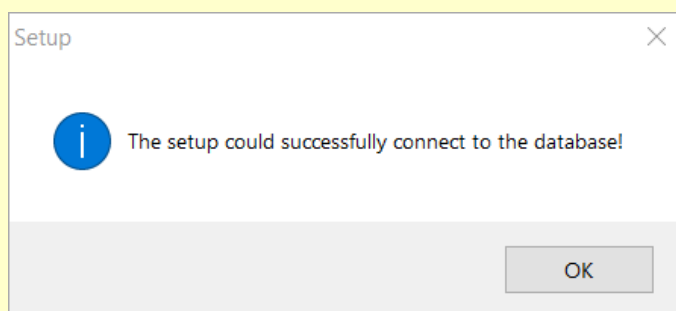
User: geoconcept

Password: geoconcept

Connection test < Back Next > Cancel

Clicking on **Next** , the installer tests the connection to the database indicated.

Message displayed when verifying the connection



If you have performed the installation with incorrect information relating to the database connection, you may have to correct this in the context file for the geoconcept-web.xml application, editing the file to enter the right information.

i Database driver

When using a database that is different to PostgreSQL, it will be necessary to copy the driver to use into the lib directory of Tomcat.

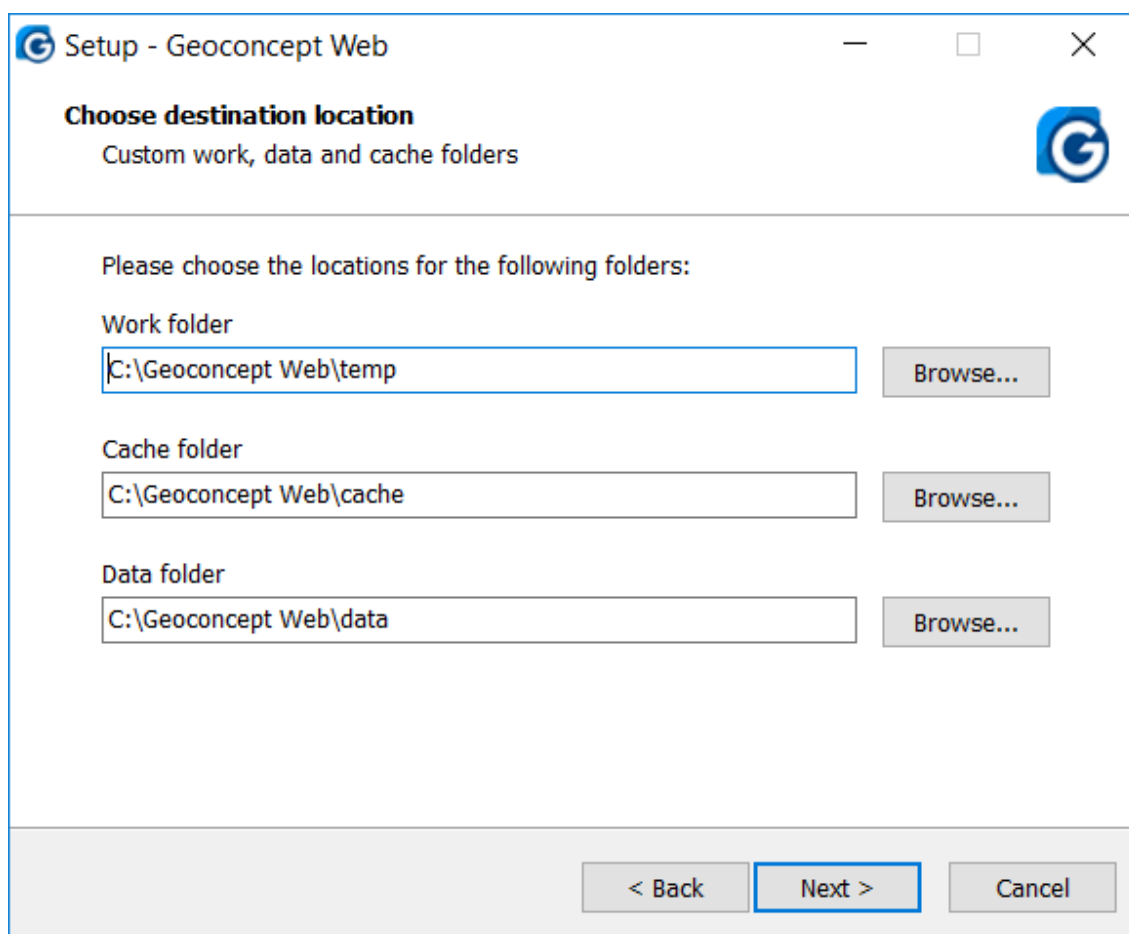
For example: for an Oracle 11g database, the jdbc driver ojdbc6.jar is available in the installation directory of the database server `c:\app\oracle\product\11.2.0\dbhome_1\jdbc\lib\`

The copy of the driver can be created at the end of the installation, and in this case you should not check the Start services now check-box during the final step. Once the driver has been copied, services can be run via the Windows services manager.

Installation directories for the Work and Cache folders

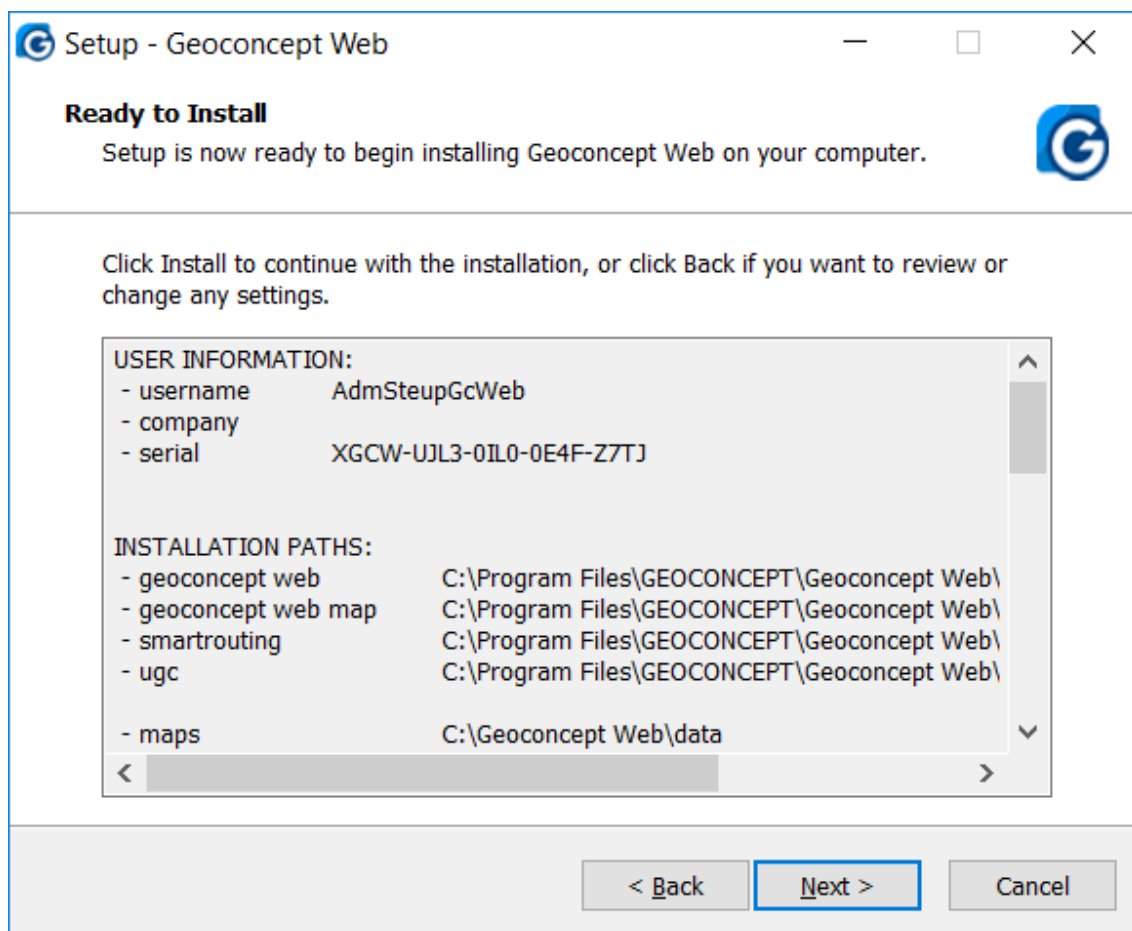
This additional step proposes to define the access filepath to the cache and work folders.

Selecting the disk location for the Work and Cache folders



The **Next** button provides access to the step summarising the components that will be installed with their destination disk location.

Components installed during a custom installation



Click on **Next** to run the Geoconcept Web installation.

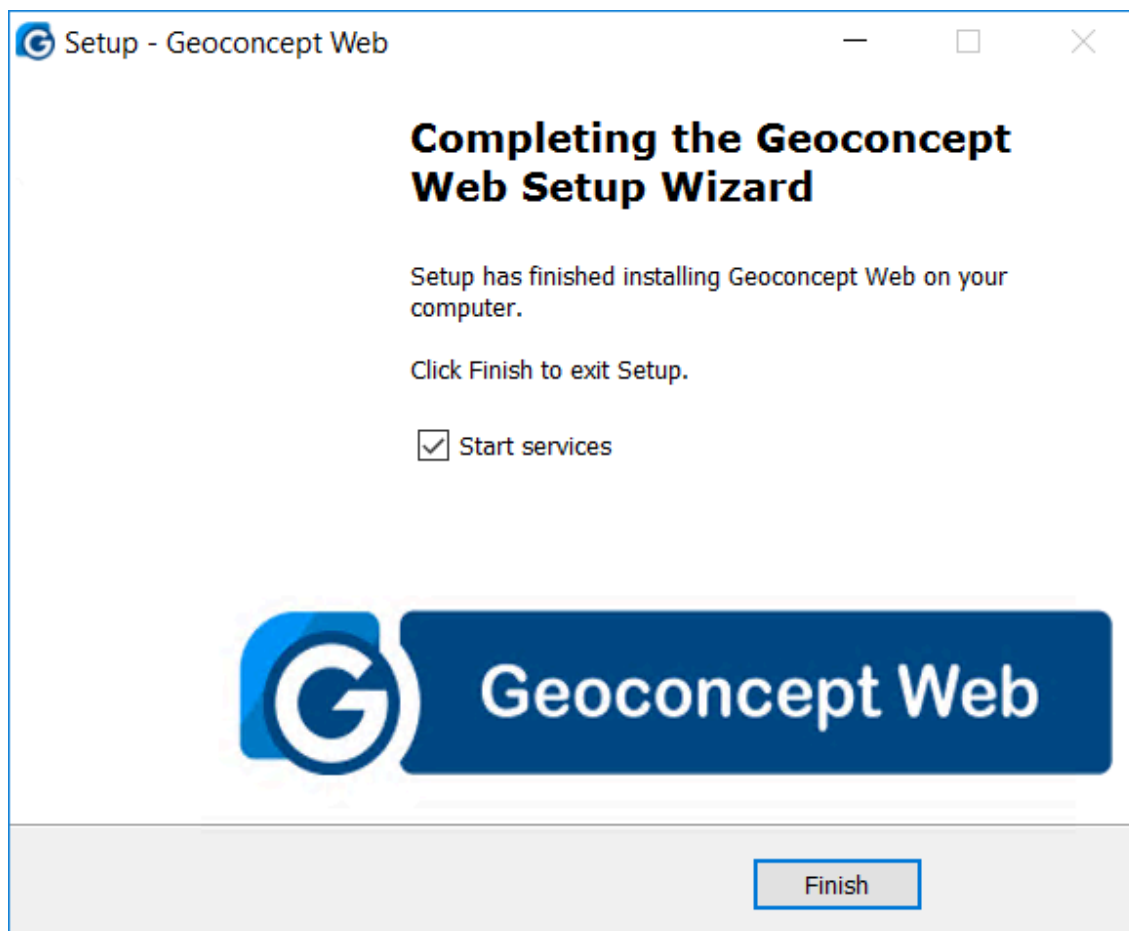
Step 7 - Services activation

Once the installation of Geoconcept Web has terminated, a check-box gives you the option to Start services now in order to execute Geoconcept Web directly following installation.

The services started are the following:

- Geoconcept Web Tomcat;
- Geoconcept Web PostgreSQL (if installed with the setup);

Installation terminated



💡 If Tomcat, and/or the database were already present on the installation machine, only those services that have been newly installed will be activated.

If you have installed Tomcat via the installer, but you have modifications to make to the web server configuration and/or the configuration of the database, do not start the Geoconcept Web Tomcat and Geoconcept Web Map services before having applied these modifications.

Then you can start the services manually via the Windows services manager.

Activation

When the installation is performed, the installer tries to activate the solution automatically. For this, an Internet connection is necessary.

If, having terminated the installation, the solution could not be activated, notably for lack of an Internet connection, the activation will need to be performed manually.

A wizard then appears with two options:

- This is the first license activation on this machine, or a reactivation;
- I want to update a license.

Option 1 - This is the first license activation on this machine, or a reactivation

This option should be chosen when you don't know your activation key.

You can choose this option when activating the product for the first time, or later on when an update of the activation key will be necessary (when changing machine, for an extension of the validity date and/or for a functional extension).

Activating Geoconcept Web for the first time

Activation Wizard

Activation Request for Geoconcept Web

Check update box only if you have already activated this software and if activation is inoperative or if you have obtained a limitation change.

This is the first license activation on this machine, or a reactivation.

I want to update a license.

Current Activation Key:

Update (new machine and/or license extension)

Emergency Activation (5-day validity)

< Previous **Next >** Cancel

The following screens will depend on the availability of an Internet connection.

No Internet connection is available

You must select the scenario that best corresponds to your situation:

- I am activating the license for the first time on this machine;
- I would like to update a license, with 2 options:

- Update;
- Emergency Activation (valid for 5 days).

In both cases, a screen will inform you of a connection error. Click on **Next** .

The next screen gives you the information needed to retrieve your activation key:

- The Serial Number;
- The Machine Key.

Having copied these information items, you should proceed - on a computer with an Internet connection - to the web site indicated in the wizard where you can enter this information and retrieve your activation key.

The next step is to enter the activation key you have retrieved in the text zone provided for this in this screen.

You can also send an email to our technical support team, to the address indicated in the assistant to retrieve your activation key, and then enter it in the zone provided in this screen.

Request for the validation key and validation

Activation Wizard

Activation Request for Geoconcept Web

You can proceed to activation on any computer connected to Internet.

Step 1: The following information is required to get your activation key: Export to file...

Serial Number:

Machine Key:

Step 2: Activate now at: <http://en.geoconcept.com/activate>
Or send an email to: support@geoconcept.com (within 2 working days)

Step 3: Load the activated license file and click Next Load from file...

< Previous Next > Cancel

Internet connection available

Two options are proposed:

- I am activating the license for the first time on this machine;



This choice is useful if you have re-established an Internet connection on the machine on which the installation has been performed.

- I would like to update a license, with 2 options:
 - Update;
 - Emergency Activation (valid for 5 days).

When updating a license, the current activation key and the machine key must be known (and pre-filled in the wizard).

The Emergency Activation procedure allows you to continue using the application temporarily if the extension to the license has not yet been authorised.

Option 2 - I want to update a license

Choose this option if you have already received an activation key. In this case you can enter the key in the text entry zone. An internet connection is not necessary to perform this activation.

Whatever the mode chosen, when the activation of the software has been completed, a screen displays to confirm the activation has taken place. It may be a good idea to print the information about the activation if you wish.

If you encounter any problem with the activation, a series of screens inform you of the nature of the problem. It is best to follow the instructions given in the wizard.



If you do not succeed in activating the solution, or you don't have the information needed for activation in your possession, you can exit from the activation wizard at any time. This will not cancel your installation and the window announcing the termination of the installation will display.

To re-run the activation wizard later, you will need to go into the installation directory for the application, and the `\tools\ulm` sub-directory. By default, the file path is `C:\Program Files\GEOCONCEPT\Geoconcept Web\tools\ulm`.

Double-click on the `activate.cmd` file. The wizard will run again.

Verification

To verify that the solution is operating correctly, go into your browser and open the welcome page [http://\(IP_server_address\)/geoconcept-web](http://(IP_server_address)/geoconcept-web) (or from the server <http://localhost/geoconcept-web>) and connect with admin as Identifier and geoconcept as Password.

- ❗ To secure your portal, we recommend modifying the Identifier and Password of the User user via the Administration menu and the User option.

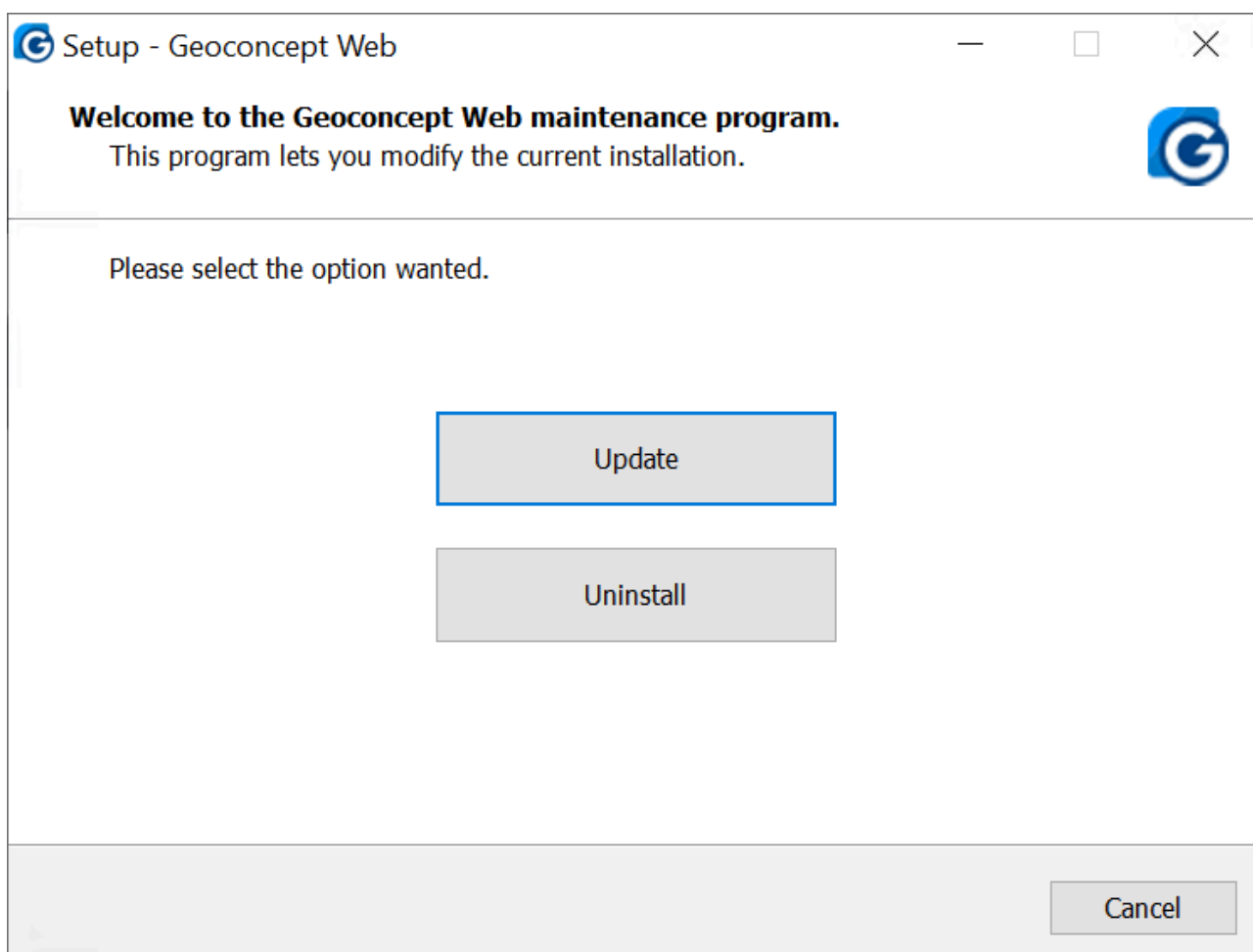
To access the portal example supplied, go to [http://\(IP_server_address\)/geoconcept-web/easy/public/portal/Loire-Atlantique](http://(IP_server_address)/geoconcept-web/easy/public/portal/Loire-Atlantique) (or from the server <http://localhost/geoconcept-web/easy/public/portal/Loire-Atlantique>). Next, use the functions available in the portal, including geocoding and itinerary, the latter being only available for the Enterprise and Standard versions of Geoconcept Web.

Update of an existing version

To run the installation, double-click on the setup.exe file and then follow the steps in the wizard.

This updation process is carried out only when there's an update from a lower version to a higher one.

Select the Update option to update the current installation



This installation mode modify and update followings components:

- Geoconcept Web (this component must be included in any installation)
- Geoconcept Web Map: allows tiling of layers to display in the portal (this component must be included in any installation);
- SmartRouting: enables route calculation (including this component is recommended);
- Universal Geocoder: allows you to geocode addresses and generate reference tables (including this component is recommended);

! This process will not allow you to modify the followings tools:

- Apache Tomcat;

- PostgreSQL;
- PostGis.