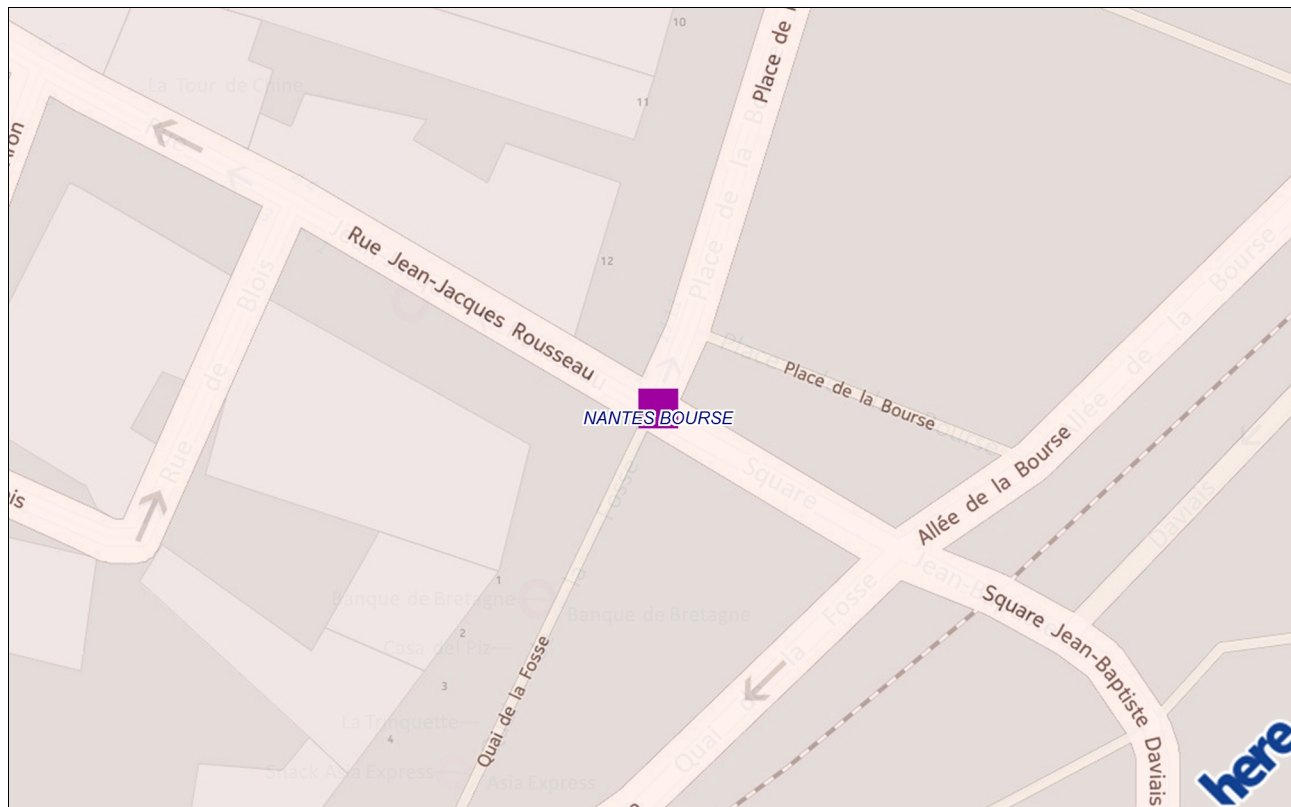
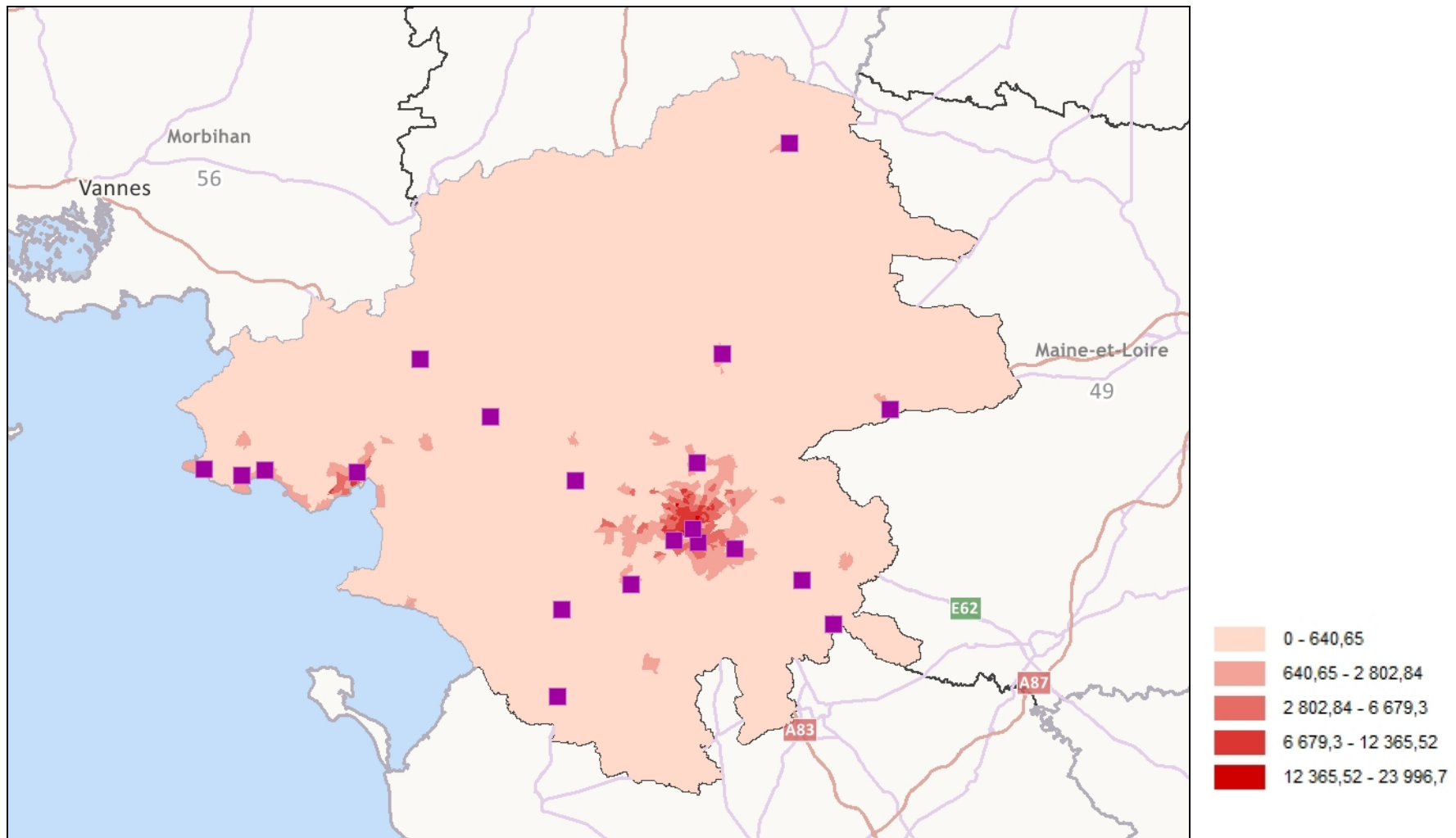


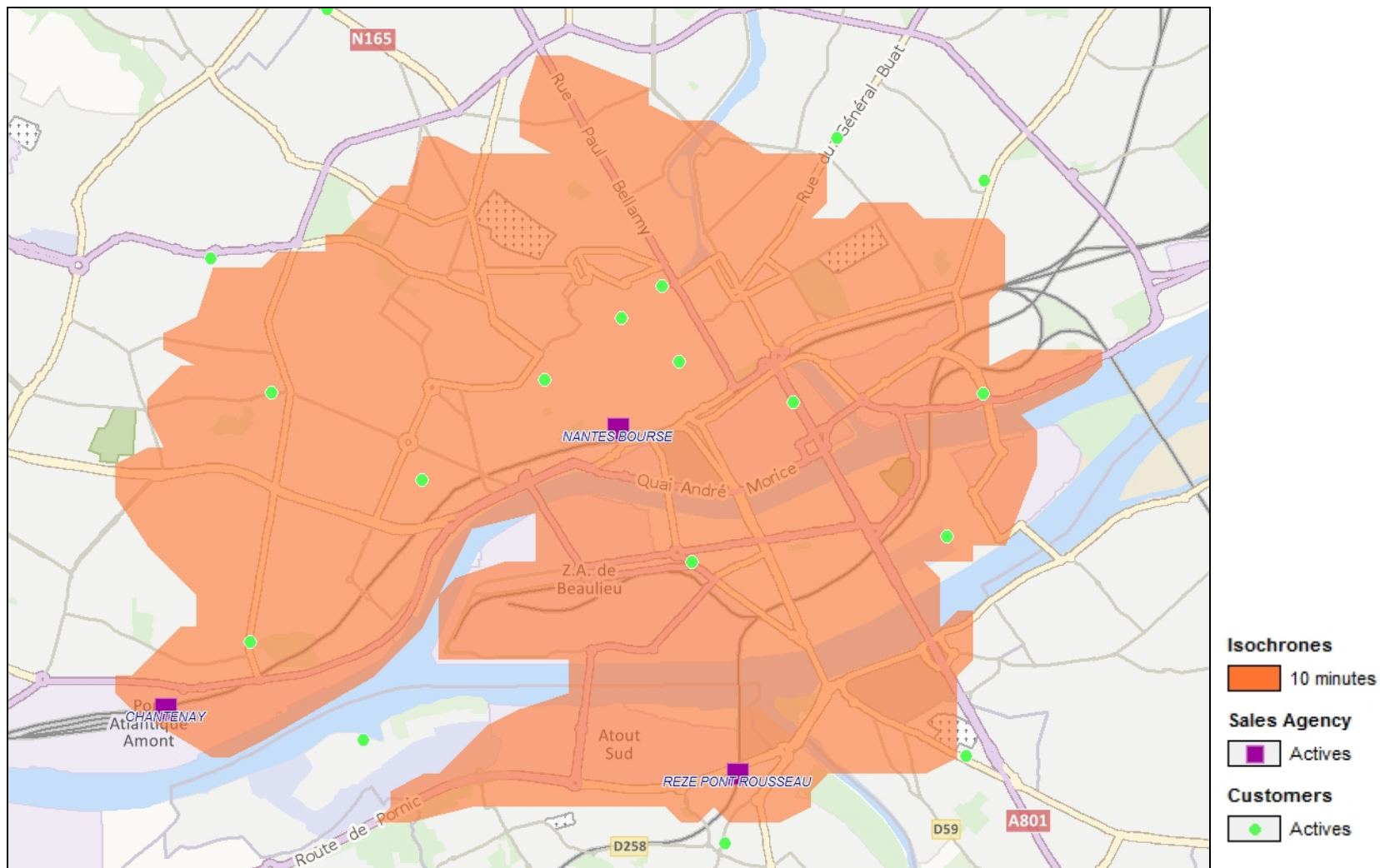
## Study on NANTES BOURSE sales point



## Density of the department and localisation of the agencies



# Isochron and customers of NANTES BOURSE

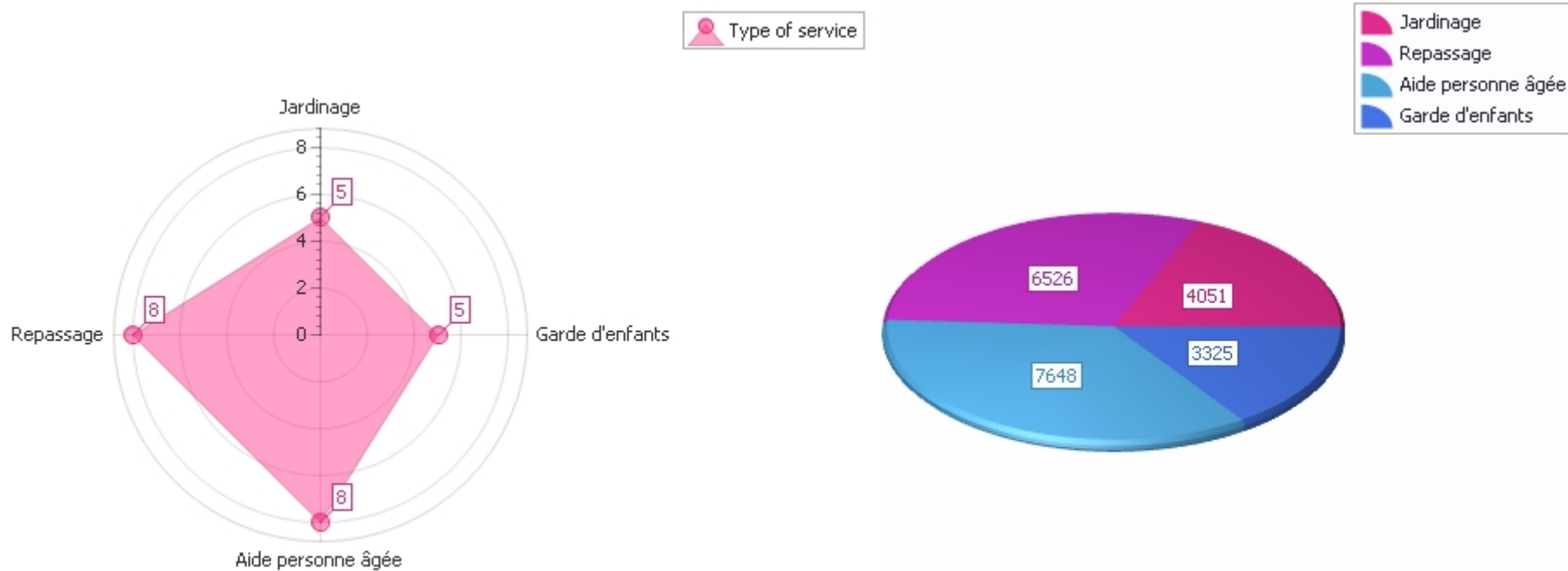


## Customers included into the isochron

We only pay attention to the customers included in the isochron of NANTES BOURSE sales point  
 We added a condition to the table in order to change the color of times superior to 8:00 mn

ID	Sales agency reference	Type of service	Sales	Nearest agency	Distance to the nearest agency (m)	Time to the nearest agency (mn)
08299A	NANTES BOURSE	Garde d'enfants	1145	NANTES BOURSE	696,27	3,04
08349A	NANTES BOURSE	Repassage	1079	NANTES BOURSE	2 582,64	7,83
08405A	NANTES BOURSE	Jardinage	888	NANTES BOURSE	1 498,44	5,95
08411A	NANTES BOURSE	Aide personne âgée	856	REZE PONT ROUSSEAU	2 504,05	8,13
08415A	NANTES BOURSE	Repassage	851	NANTES BOURSE	3 149,61	8,98
08378A	NANTES BOURSE	Jardinage	789	NANTES BOURSE	1 152,19	4,94
08369A	NANTES	Repassage	754	NANTES BOURSE	652,37	2,84
08375A	CHANTENAY	Repassage	419	CHANTENAY	1 291,97	4,80
08245A	NANTES BOURSE	Garde d'enfants	346	NANTES BOURSE	1 141,17	5,15
08380A	NANTES BOURSE	Garde d'enfants	278	NANTES BOURSE	1 272,36	3,98
08379A	NANTES BOURSE	Repassage	261	NANTES BOURSE	1 650,55	4,79
<b>Sum of sales 7666</b>						

# Type of NANTES BOURSE's customers services and profit sharing



There is 5 customers for gardening services, 5 for children care, 8 for ironing and 8 for elderly people care

Elderly people care and ironing are the both type of services which yield the more money (7648 and 6526 euros)